

Lighting Solutions: Shine Brighter with Trane®



Integrating lighting and HVAC for greater efficiency

Lighting has changed. Dramatically, and quickly. Today's broad spectrum of LED lighting has opened a new area of lighting science: the study and application of light's influence on people; how it affects our physical and mental health and our perceived productivity. Knowledge and technology are driving innovation.

Today, there are some 70,000 lighting companies around the world. Many are solely focused on changing light fixtures to improve quick energy ROI. But when energy is the only objective, building owners miss out on a big opportunity to improve the indoor atmosphere with lighting that supports human well-being—and to simplify IEQ management with integrated lighting and HVAC control systems where more than half of a building's energy can be controlled from a single platform, from virtually anywhere in the world.



Advanced LED Lighting

Replicating nature's 24-hour pattern of sunlight and darkness—indoors—may **improve wellness and productivity** by modulating light color and temperature throughout the day



Germicidal UV Lighting

Using specific, safe wavelengths on the ultraviolet light spectrum to **sanitize the air and surfaces**

Trane's Lighting Approach

Through our deep understanding of how people interact with the built environment we are able to design and deliver lighting outcomes that encourage productivity, learning, and sense of well-being. Just as we understand the impact that HVAC has on people's comfort, lighting also impacts our mood, wellbeing, and even our health.*

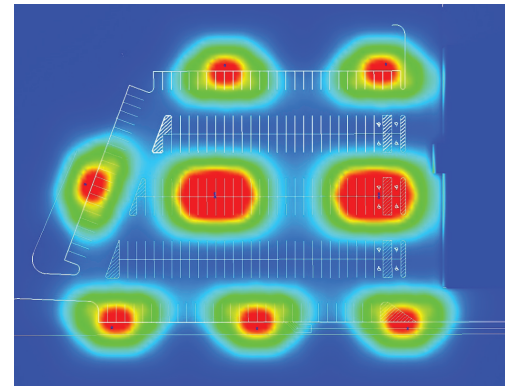
Lighting Design

Trane® approaches the design of every lighting system based on the user's interaction with the built space. We work to balance quality lighting design, energy efficiency, and to provide the best lighting solution to our customer's needs—all within the project budget.

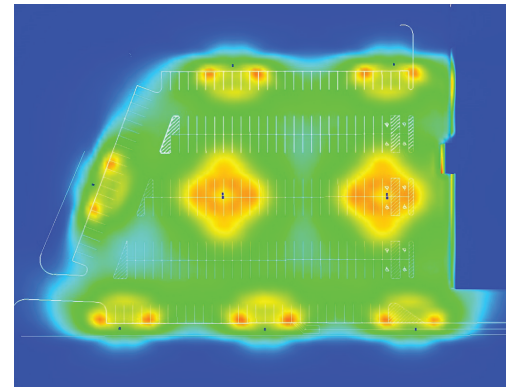
Intelligent Lighting

The Power of Integration

Connectivity is a large part of what makes our approach different. When appropriate, Trane will design a modern lighting control system that is easily integrated into the Tracer® SC+ or Ensemble® platforms making for one central building automation system (BAS). Our goal is to make your systems easy to use and operate long into the future. They will require training for some staff.



Typical competitor lighting design does not meet code.



Trane's lighting design meets code by providing uniform illumination.

*Blume, Christine, Garbazza, Corrado; Spitschan, Manual, "Effects of light on human circadian rhythms, sleep and mood," Somnologie, Aug. 20, 2019, <https://www.ncbi.nlm.nih.gov/pmc/articles/PMC6751071/>

Let us help you plan for the future as your trusted energy partner.

To learn more, email lighting@trane.com

or visit trane.com/lighting



Trane – by Trane Technologies (NYSE: TT), a global climate innovator – creates comfortable, energy efficient indoor environments through a broad portfolio of heating, ventilating and air conditioning systems and controls, services, parts and supply. For more information, please visit trane.com or tranetechnologies.com.

All trademarks referenced in this document are the trademarks of their respective owners.

© 2021 Trane. All Rights Reserved.

SYS-SLB030-EN
04/26/2021